

**THE BIBLE**  
**EXHIBITION**





## Contents of the Exhibition



The Exhibition comprises a visual display in the form of models, dressed figures, ancient artifacts and screens, which take visitors on a pictorial progression through the Bible.

They will be introduced to the *Creation* and the *Flood*. Follow the *Patriarchs*, witness the *Exodus* in picture and tableau. Wander with *Israel* in the wilderness and march with them as they go in to conquer the promised land.

The *Davidic Monarchy* is also given attention and the eventual *Exile* concludes the *Old Testament* display.



To supplement the photographic display the models give added atmosphere, beginning with Noahs Ark, at a scale of 1 : 160. There is a tableau depicting the Passover Scene, clearly showing a blood stained lambs skin, with the blood sprinkled door post and lintel of a typical Israelite dwelling.



A model of the *Tabernacle* is on display showing the setting of the Tabernacle in the court, while others models, of a larger scale, contain the articles of furniture found in the *Holy Place* and the *Holy of Holies*. There is a full scale model of the *High Priest* robed in his garments of glory and beauty.

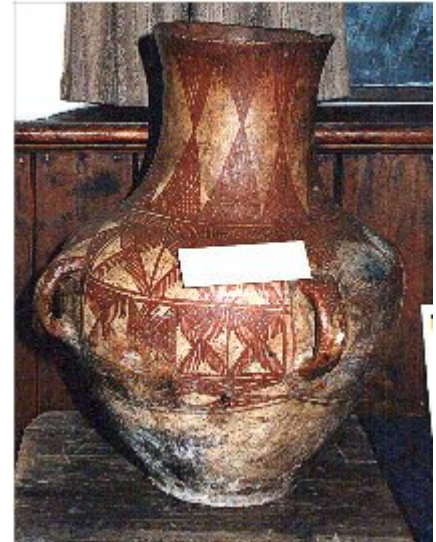
The visitor is required to travel forward in time from the Tabernacle in the wilderness to *Solomons Temple*, the model giving some idea of the splendour and glory of the Temple in the land.



The New Testament material is primarily concerned with the life of The Lord Jesus Christ, with one screen taken up with His death, burial, resurrection and ascension.

There is a model of *Herods Temple*, giving some idea of the splendour and magnificence of that building. This was the Temple frequented by the Lord Jesus, was the scene of His teaching and miracles, was cleansed by Him and its Veil was rent at His death.

An important feature of this Exhibition is a model of *The Garden Tomb*.



The display is concluded with a section on the Early Church and several on the Translation of the Bible.

There are many other things which can be seen including a replica of *The Rosetta Stone*, dealing with Egyptian Hieroglyphics; and a replica *Babylonian Tablet*, dating from the time of Elijah. View *first century nails* used by Romans for crucifixion, Hebrew, Canaanite and Greek *pottery*, Jewish *Phylacteries* and a *Shofar*, (Ram's Horn Trumpet).





# Contents of the Exhibition



## The Early Church 3

This panel includes several photographs of ancient ruins, including a large stone archway and a temple with columns. It also features a map of the region and a small illustration of a person.

## The History of the Bible 1

This panel includes images of ancient scrolls, a person writing on a scroll, and a timeline at the bottom showing the progression of the Bible's history from 1000 BC to 100 AD.

### THE PARABLE OF THE LOST COIN

Either what woman having ten pieces of silver, if she lose one piece, doth not light a candle, and sweep the house, and seek diligently till she find it? And when she hath found it, she calleth her friends and her neighbours together, saying, Rejoice with me; for I have found the piece which I had lost. Likewise, I say unto you, there is joy in the presence of the angels of God over one sinner that repenteth.

Luke 15:10-17

## The History of the Bible 4

This panel includes images of various Bible translations, including the NIV and the King James Bible. It also features a timeline at the bottom showing the publication dates of these translations.

### **Sample School Visit Structure**

Class sizes are normally about 30 children.

00.00	Children arrive Welcome and Briefing of teachers and children
00.05	Guided tour Brief explanation of each section Explain where and how to find answers to questions
00.20	Children divided into groups Receive clipboard, questionnaire and pen
00.45	Children return to one group and have squash and biscuits whilst marking questionnaire followed by any questions
00.55	Children leave and receive Leavers Pack.

### **Teacher Guidelines**

The time, duration and content of visits to the Bible Exhibition can be tailored to the individual requirements of classes. Please discuss this with us when booking.

Classes of about 25 pupils are ideal with a maximum of 45.

It is best to divide the pupils into groups of 3-5.

The introductory tour takes approximately 10-15 minutes.

Approximately 25 minutes is allowed for completing worksheets.

A sample of the worksheets is enclosed and all worksheets are provided for each pupil.

Please allow 10 minutes at the end for answers and refreshment.

Clipboards, pens/pencils are provided.

A leaving pack is available for each pupil.

### Teacher Comments

Dear Mr Haughton

I am writing to say thank you for inviting our school to visit the Bible Exhibition on the 11th and 12th July 2011. All of the children thoroughly enjoyed viewing the exhibits and completing the quiz sheets.

We all felt very welcomed by the people helping run the exhibition and the support they gave was terrific. The children were able to ask lots of questions to broaden their knowledge.

I know that my class personally enjoyed the trip and the boys loved having a go at holding the Roman spear!

I am aware that the exhibition is run every few years and would be delighted if you could put us on your records so we could visit the next time the exhibition is held.

Head of Religious Education.

Dear Paul

Thank you so much for showing my class round the fantastic Bible Exhibition today.

The girls really enjoyed the trip and learnt so much about the content of the Bible.

The interactive displays and the realistic models brought the Bible stories to life, making it a very memorable day.

I thought the guided tour when we arrived was both informative and fun. Worksheet 2 was pitched perfectly for a Year 4 class and the staff/volunteers at the Gospel Hall were all extremely welcoming, friendly and helpful.

We had an amazing morning and I would definitely recommend this trip to other schools.

Thank you so much.

Year 4 teacher.

### Childrens comments

Thank you for showing us the Exhibition. You made it sound really interesting. The replicas were absolutely amazing and it was really good we could touch some of the models.

Thank you so much for helping us and I wish we could come back again.

I have learned a lot about the Bible and I never knew there are 66 books in the Bible.

Thank you so much for the wonderful exhibition, it was amazing. The artefacts were great.

My favouritte part was where we went off in partners and did the worksheet. I had a really fun morning and also I loved the goodie bags.



## Sample Schools Booking Form

### Bible Exhibition Booking Form

I wish to bring a group of pupils from my school to view the Bible Exhibition

School .....

Address .....

.....

Teacher(s) ..... Phone .....

Email .....

Number of Pupils (approx) ..... Age(s) .....

Preferred time of visit: Date ..... Time .....

Best time for contacting you .....

We will contact you to confirm availability and time booked.